

# SCHOOL TRAFFIC MANAGEMENT PLAN

It's all part of Council's plan



School name:

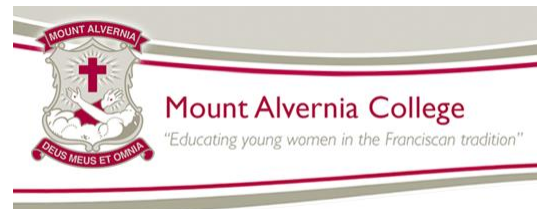
Mount Alvernia College

School address:

82 Cremorne Rd, Kedron



Dedicated to a better Brisbane



**Table 1: School overview**

<b>School Name: Mount Alvernia College</b>	
<b>Address: 82 Cremorne Road, Kedron QLD 4031</b>	
<b>Grades at the school: 7-12 (girls)</b>	<b>Administration contact: (07) 3357 6000 <a href="mailto:mta@mta.qld.edu.au">mta@mta.qld.edu.au</a></b>
<b>School population: 900</b>	<b>Expected population in three years' time: 930</b>

**Table 2: Traffic management committee**

<b>Committee chairperson/champion: Ms Samantha Jensen (Principal)</b>
<b>Committee members: Ms Samantha Jensen (Principal) Mrs Paulette Corkery (Business Manager) Mr Cameron West (Property Manager)</b>

**Table 3: Traffic management plan endorsement**

Name	Position	Date
Dr Kerrie Tuite	Principal	19 Sep 2018

## Drop-and-go (passenger loading) zones

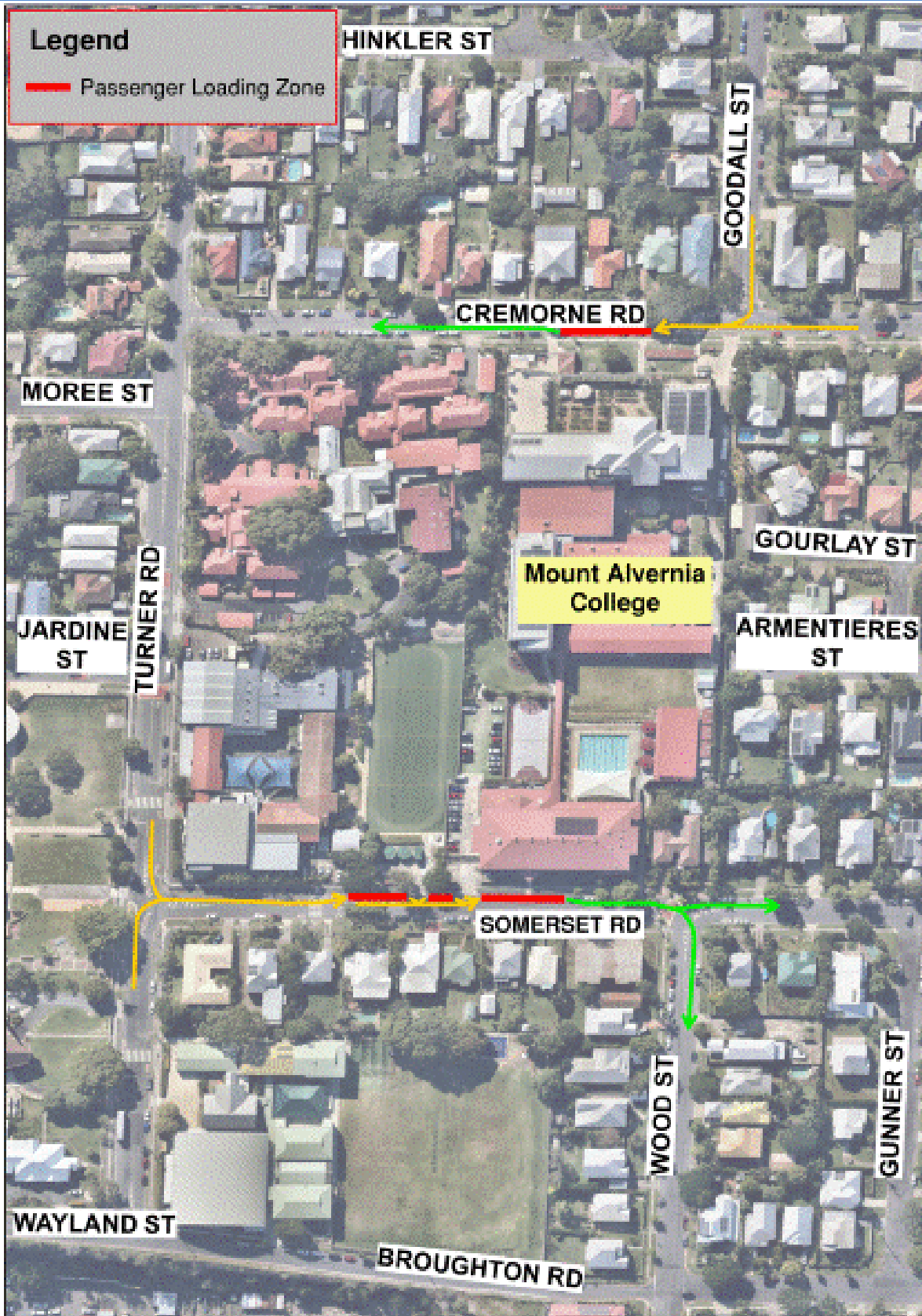
Drop and go zones are designed to act like a flowing taxi rank with a maximum stopping time of two minutes.

### Locations

---

Figure 1 details the location and number of drop-and-go zones, and the direction of traffic flow.

Figure 1: Map of drop and go (passenger loading) zones



## Table 4: Notes and rules for drop-and-go (passenger loading) zones

### 1. CREMORNE ROAD AND SOMERSET ROAD LOADING ZONES

The College's loading zones are located on Cremorne Road and Somerset Road.

Motorists are permitted to stop for up to two minutes if they are dropping off and picking up students. Motorists must stay with their vehicle at all times.

If students are not ready to be collected, motorists must leave the zone and re-join the queue. To ensure students are ready to be collected, motorists are asked to arrive at least ten minutes after school has been let out.

Motorists must listen to any instructions given by loading zone supervisors to ensure the smooth and safe operation of the zone. Motorists who fail to obey instructions from the loading zone supervisor and park in an unlawful manner may be prohibited from accessing the College's car park.

### General Notes

- The College will provide a map of the drop-and-go passenger loading zones that service it to all parents with children at the College.
- The College will clearly communicate its expectations with regard to the safe use of the Drop-and-go zone to all parents on a regular basis.
- The College will also clearly communicate its expectations with regard to compliance with normal road rules to all students, parents, and staff on a regular basis.

## Parking areas

Highlighting the College's available parking areas, especially in streets surrounding the College, can help parents and carers locate longer term parking options to meet their specific needs.

Encouraging parking in these areas can reduce traffic congestion at the college gates and instances of motorists unlawfully parking in other dedicated areas.

## Locations

---

Figure 2 outlines our college's:

- long-term parking options in streets surrounding the College
- shorter-term parking areas (eg 10 minutes)
- staff parking areas
- disability parking spaces
- parking areas for special events (eg fetes).

## Rules

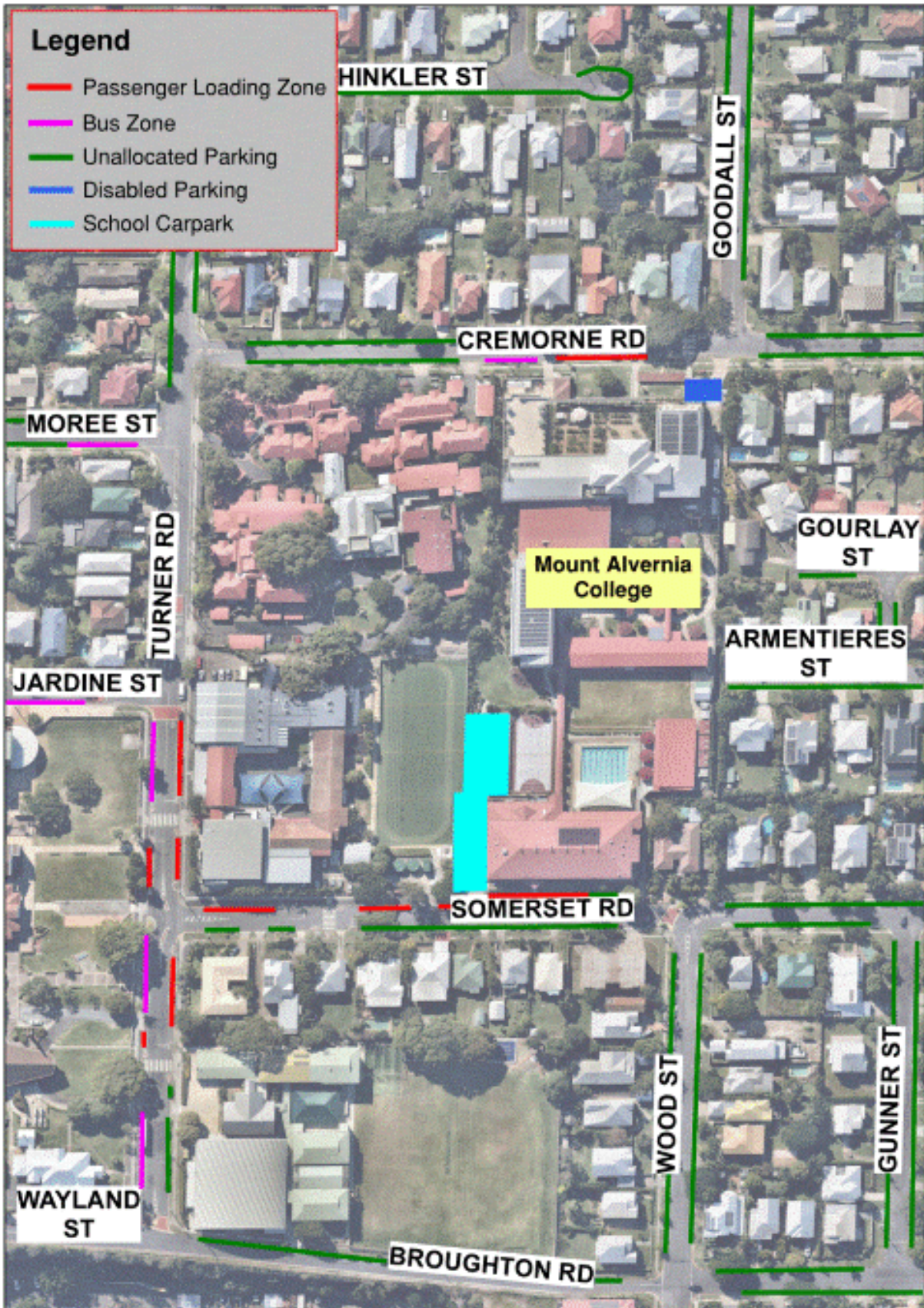
---

Schools often have rules that students, parents, and carers must follow when parking in particular areas. Table 5 details our most important parking rules. These rules will be reviewed and updated if safety or traffic congestion problems arise, or as the College grows.

Setting and effectively communicating your school's parking rules to parents, students and carers may help to address the following common problems:

- Illegal parking in designated disability parking spaces.
- Illegal parking across local residents' driveways.
- Illegal parking at intersections.
- Illegal parking across school crossings.
- Unauthorised parking in designated staff parking areas.

Figure 2: Map of parking areas



## Table 5: Notes and rules for parking areas

### LONG TERM PARKING

Long-term (unallocated) all-day parking is available on Cremorne Road, Goodall Street, Somerset Road, and Wood Street. Long-term all-day parking is also available on other streets within a short walk from the College.

Motorists are reminded to obey any *No Stopping* conditions that may apply, and not park across residents' driveways, pedestrian crossings, or intersections.

### STAFF PARKING

Staff parking is available within the College's car parks, accessed via Somerset Road. Parents and carers are not permitted to pick up or set down students within staff and dedicated visitor parking areas.

### DISABILITY PARKING

Disabled parking is available onsite at the College, which can be accessed from Cremorne Road.

### DELIVERIES

Authorised deliveries are permitted within the car park on the College's ground with prior arrangement. Please contact the College's administration to arrange deliveries.

### BUS ZONES

Bus zones are reserved for school and commuter bus services only. Motorists who unlawfully park in these spaces may be reported to Council's Suburban Safety and Parking Compliance team and/or the Queensland Police Service.

### General Notes

- The College will provide a map of surrounding parking areas to all parents with children at the College.
- The College will also clearly communicate its expectations with regard to compliance with normal road rules to all students, parents, and staff on a regular basis.



## Public and active travel

### Public transport

Public transport helps to reduce traffic congestion and improve air quality around schools.

Students who learn to use public transport also gain valuable skills for travelling to work and higher education institutions after leaving school.

Students and parents can see what public transport options may be available to them by visiting TransLink's Journey Planner at [www.translink.com.au](http://www.translink.com.au), or by phoning TransLink directly on 13 12 30.

### Active travel

Encouraging students to walk, ride, or scoot to school - either all or part of the way - not only helps ease traffic congestion and decrease pollution, but also promotes a healthy lifestyle and teaches children valuable road safety skills.

Figure 3 highlights where public and active transport infrastructure is located, such as bicycle and scooter parking, suggested cycle and walking routes, as well as bus stops.

#### Did you know?

Australian physical activity guidelines recommend that children get at least 60 minutes of moderate to vigorous activity each day. Walking, cycling, or scooting to and from school is an easy way to help kids achieve this. Active travel not only combats increasing levels of obesity and Type II diabetes but also improves bone strength and mental health.

### Public and active travel programs and activities

Various organisations have a number of public and active transport travel programs on offer.

The following list contains some of the more popular programs and activities which Brisbane schools take advantage of:

- Brisbane City Council's Active School Travel Program
- RACQ Streets Ahead Program
- Park and Stride
- Walking School Bus
- Bicycle Train.

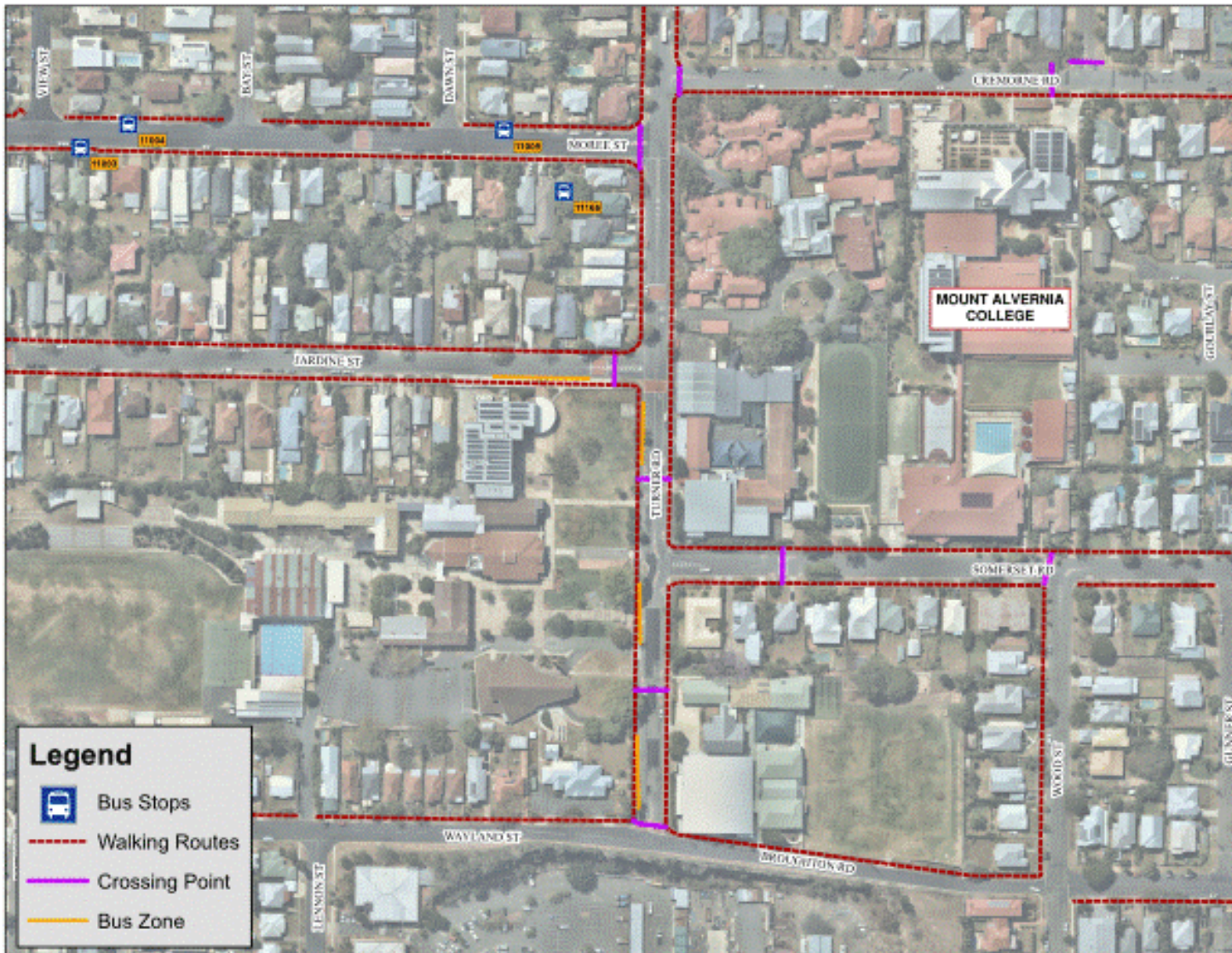
Table 6 helps to keep track of the programs and activities on offer.

For more information about public and active travel programs and activities see appendix A of the example document. Your school may wish also wish to contact Brisbane City Council on (07) 3403 8888, or the Department of Transport and Main Roads' road safety advisors on 1300 360 135 for additional assistance.

### Did you know?

Carpooling can be an effective way of reducing the number of vehicles trying to access parking spaces, reducing traffic and parking congestion. Your school may even have other creative strategies to help reduce the demand for parking spaces.

Figure 3: Map of walking and cycling routes, and public transport stops



## Table 6: Notes and rules for active and public transport

### BUS SERVICES

Students are encouraged, where possible, to travel to and from school by bus. This helps to reduce traffic congestion at the College's gates and teaches students valuable skills for later in life.

For information about what services are available, students, parents and carers can visit Translink's Journey Planner at [www.translink.com.au](http://www.translink.com.au) or contact the College's administration.

The following bus stops are located near Mount Alvernia College:

- 11166 – Moree St at Dawn St (outbound), stop 43 - <http://translink.com.au/stop/011166/gtfs/>

- 11005 – Moree St at Dawn St (inbound), stop 43 - <http://translink.com.au/stop/011005/gtfs/>
- 11003 – Moree St at View St (outbound), stop 42 - <http://translink.com.au/stop/011003/gtfs/>
- 11004 – Moree St at View St (inbound), stop 42 - <http://translink.com.au/stop/011004/gtfs/>
- 11011 – Padua College – Jardine St Stop A - <http://translink.com.au/stop/011011/gtfs/>
- 30066 – Turner Rd at Padua College - <http://translink.com.au/stop/030066/gtfs/>

The following bus routes service these stops:

- ROUTE F1 – <https://www.mta.qld.edu.au/wp-content/uploads/Route-F1-as-of-8-May-2018.pdf>
- ROUTE 354 - <https://jp.translink.com.au/plan-your-journey/timetables/bus/t/354>
- ROUTE 334 - <https://jp.translink.com.au/plan-your-journey/timetables/bus/t/334>
- ROUTE 901 - <https://jp.translink.com.au/plan-your-journey/timetables/bus/t/901>
- ROUTE 908 - <https://jp.translink.com.au/plan-your-journey/timetables/bus/t/908>
- ROUTE 947 - <https://jp.translink.com.au/plan-your-journey/timetables/bus/t/947>
- ROUTE 948 - <https://jp.translink.com.au/plan-your-journey/timetables/bus/t/948>
- ROUTE 950 - <https://jp.translink.com.au/plan-your-journey/timetables/bus/t/950>
- ROUTE 939 - <https://jp.translink.com.au/plan-your-journey/timetables/bus/t/939>
- ROUTE 941 - <https://jp.translink.com.au/plan-your-journey/timetables/bus/t/941>
- ROUTE 6870 - <https://jp.translink.com.au/plan-your-journey/timetables/bus/t/6870>
- ROUTE 6871 - <https://jp.translink.com.au/plan-your-journey/timetables/bus/t/6871>
- ROUTE 6872 - <https://jp.translink.com.au/plan-your-journey/timetables/bus/t/6872>
- ROUTE 6873 - <https://jp.translink.com.au/plan-your-journey/timetables/bus/t/6873>
- ROUTE 6874 - <https://jp.translink.com.au/plan-your-journey/timetables/bus/t/6874>
- ROUTE 906 - <https://jp.translink.com.au/plan-your-journey/timetables/bus/t/906>
- ROUTE 911 - <https://jp.translink.com.au/plan-your-journey/timetables/bus/t/911>
- ROUTE 913 - <https://jp.translink.com.au/plan-your-journey/timetables/bus/t/913>
- ROUTE 918 - <https://jp.translink.com.au/plan-your-journey/timetables/bus/t/918>
- ROUTE 920 - <https://jp.translink.com.au/plan-your-journey/timetables/bus/t/920>
- ROUTE 940 - <https://jp.translink.com.au/plan-your-journey/timetables/bus/t/940>
- ROUTE 943 - <https://jp.translink.com.au/plan-your-journey/timetables/bus/t/943>
- ROUTE 945 - <https://jp.translink.com.au/plan-your-journey/timetables/bus/t/945>
- ROUTE 946 - <https://jp.translink.com.au/plan-your-journey/timetables/bus/t/946>
- ROUTE 956 - <https://jp.translink.com.au/plan-your-journey/timetables/bus/t/956>

## CROSSING ROADS

Students, parents, and carers are asked to cross roads at designated crossing points.

When crossing at **traffic lights**, only commence crossing when the green pedestrian signal is displayed and traffic has come to a complete stop.

When crossing at **children's crossings**, only commence crossing the road when directed by the crossing supervisor.

When crossing at **pedestrian refuges** and **unsignalised intersections**, only commence crossing when there is a suitable gap in traffic. Inexperienced pedestrians should be accompanied by an adult when crossing at these locations.

## Developing and implementing your plan

### Action plan

---

Table 7 outlines the College's plan for addressing its travel management issues. A school's action plan is intended to be a living document and outlines emerging travel management issues your school is actively aiming to address. Your school's traffic management champion or committee should review the progress at pre-arranged meetings.

To plan for future growth and change, the College may proactively implement new programs and activities to mitigate future problems from emerging.

### Enforcement

---

While one of the most effective way of addressing issues at schools is through communicating rules and arrangements to students, parents, and carers, there may be times when the College considers it is necessary for enforcement activities to be undertaken to reinforce good behaviours.

Enforcing parking restrictions, speed limits and other road rules can receive a mixed response from your school's community. The College, therefore, clearly defines what actions will be taken prior to making a formal request for enforcement, and communicate this to students, parents and carers in advance. This will ensure the college community is aware of the steps the College has taken prior to making this request, and why it is now considered necessary.

Table 7: Action plan

Date raised	Description	Agreed action	Status
July 2018	Mount Alvernia College does not have a School Traffic Management Plan.	Brisbane City Council has assisted the school to complete a School Traffic Management Plan.	Complete.
August 2018	Concerns have been raised regarding traffic congestion on Turner Road. Traffic queue behind St Anthony's Primary School loading zone is long, which appears to be occurring as a result of the Crossing Supervisor giving pedestrians constant priority rather than balancing vehicular traffic flow and pedestrian movements.	BCC to liaise with Transport and Main Roads to determine the nature of the training Crossing Supervisors receive. Propose amendments to the training if required or communicate to the Crossing Supervisor the need to manage competing traffic and pedestrians.	Complete.
August 2018	Concerns have been raised regarding illegal parking over yellow lines prior to and after the pedestrian crossing on Cremorne Road.  College has requested yellow lines be refreshed and <i>No Standing</i> signs be placed.	College is to be listed on BCC's routine enforcement schedule.  BCC will refresh the yellow lines to ensure they are visible.  BCC is unable to also place <i>No Stopping</i> signs here in addition to yellow lines. Unlawful parking behaviour will be targeted by enforcement officers.	Complete
August 2018	College has requested that the unallocated parking (approx 17 metres) immediately after the loading zone on Cremorne Road be changed to a bus zone from 7-9am and 2-6pm school days.	BCC to implement change. Signs to be installed in October 2018.	Complete
August 2018	Concerns raised over the amount of parked cars using surrounding streets for all-day parking, in particular the lower	Parking is primarily being used by students, staff, and residents and as such there are no actions BCC can take regarding parking at this time.	Complete

	parts of Cremorne Road closer to Gympie Road.		
August 2018	College requests help from BCC in advising parents on the correct way to use the College's loading zones.	BCC will provide the College with words and maps to use for educational promotion of how to use the College's loading zones.	Complete.
August 2018	College has requested that the crossing on Cremorne Road be turned into a supervised crossing, which could be supervised by college staff or volunteers.	BCC has liaised with TMR on behalf of the College and it has agreed in principle to provide training for the College's supervisors once the College's application is accepted. In addition, BCC will upgrade the crossing infrastructure to create a combined zebra/children crossing which can be supervised (expected installation in late October/early November 2018).	Complete

## Contacts

The following list contains contacts who may be able to provide support to your school.

Contact Card		
Name	Phone number	Description
Emergency (Triple Zero)	000	<ul style="list-style-type: none"> <li>Emergency Police, Fire, and Ambulance</li> </ul>
Queensland Police Service	131 444	<ul style="list-style-type: none"> <li>Speeding and moving vehicle enforcement</li> <li>Theft and property damage</li> </ul>
Brisbane City Council	(07) 3403 8888	<ul style="list-style-type: none"> <li>Traffic management plans</li> <li>Parking enforcement</li> <li>Footpath and road maintenance</li> </ul>
Councillor Fiona Hammond <b>Marchant Ward Office</b>	(07) 3407 0707	<ul style="list-style-type: none"> <li>Brisbane City Council Local Councillor</li> </ul>
Department of Transport and Main Roads	1300 360 135	<ul style="list-style-type: none"> <li>Local road safety advisors</li> <li>Crossing supervisor enquiries</li> <li>Drop-and-go zone monitor training</li> </ul>